

Features

- Low reverse current and low forward voltage
- High reliability
- Small surface mounting type

HF

Typical Applications

- For general purpose applications

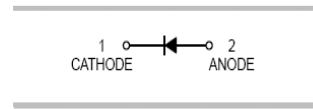
Mechanical Data

- Case: SOD-123,SOD-323
- Molding compound, UL flammability classification rating 94V-0
- Terminals: Tin plated leads, solderable per MIL-STD-202, Method 208



SOD-123

SOD323



Ordering Information

Part Number	Package	Shipping	Marking Code
B5818W	SOD-123	3000pcs / Tape & Reel	SK
B5818WS	SOD-323	3000pcs / Tape & Reel	SK
B5819W	SOD-123	3000pcs / Tape & Reel	SL
B5819WS	SOD-323	3000pcs / Tape & Reel	SL

Maximum Ratings (@T_A=25°C unless otherwise specified)

Parameter	Symbol	B5818W(S)	B5819W(S)	Units
Peak Repetitive Reverse Voltage	V _{RRM}	30	40	V
RMS Reverse Voltage	V _{RMS}	21	28	V
Maximum Average Forward Output Current	I _{F(AV)}	1		A
Peak Forward Surge Current,8.3ms Single Half-sine-wave	I _{FSM}	10		A

Thermal Characteristics

Parameter	Symbol	B5818W/B5819W	B5818WS/B5819WS	Units
Power Dissipation	P _D	500	250	mW
Typical Thermal Resistance per leg	R _{θJA} *	200	400	°C /W
Operating Junction Temperature Range	T _J	125		°C
Storage Temperature Range	T _{STG}	-55 to +150		°C

* Part mounted on FR-4 board with recommended pad layout

Electrical Characteristics (@ $T_A=25^\circ\text{C}$ unless otherwise specified)

Parameter	Symbol	Test conditions	Min.	Typ.	Max.	Units
Forward Voltage	V_F^*	$I_F=1\text{A}$ B5818W(S)	-	-	0.55	V
		$I_F=1\text{A}$ B5819W(S)			0.60	
		$I_F=3\text{A}$ B5818W(S)			0.875	
		$I_F=3\text{A}$ B5819W(S)	-	-	0.90	
Maximum Peak Reverse Current	I_R^{**}	$V_R=30\text{V}$ B5818W(S) $V_R=40\text{V}$ B5819W(S)	-	-	1	mA
Capacitance Between Terminals	C_T	$V_R=4\text{V}, f=1\text{MHz}$	-	39	120	pF

*Pulse width $\leq 380\ \mu\text{s}$, Duty cycle $< 2\%$

**pulse test, $t_p \leq 5\text{ms}$

Ratings and Characteristic Curves ($T_A=25^\circ\text{C}$ unless otherwise noted)

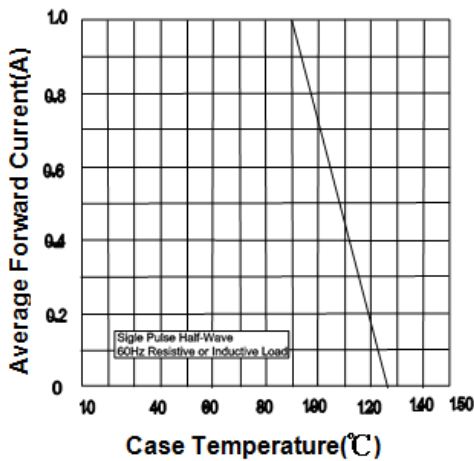


Fig.1 Forward Current Derating Curve

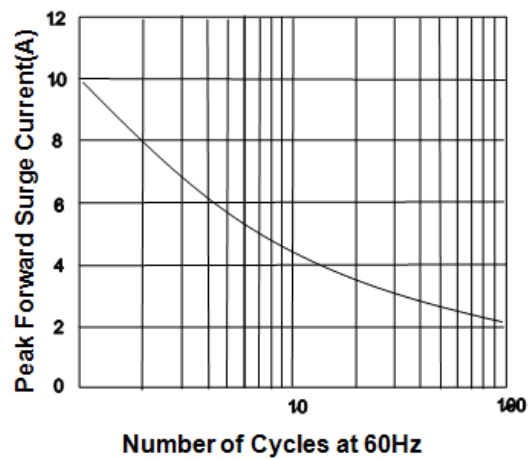


Fig.2 Maximum Non-Repetitive Peak Forward Surge Current

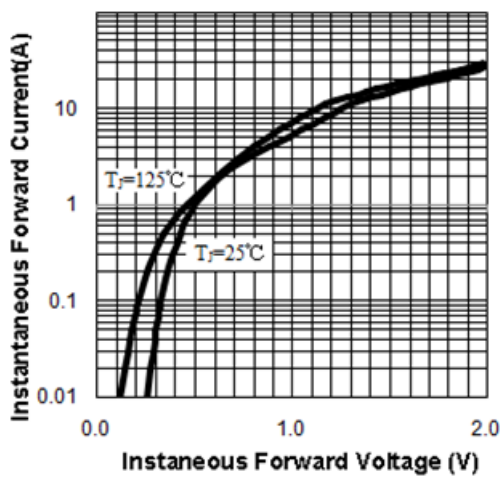


Fig.3 Typical Instantaneous Forward Characteristics

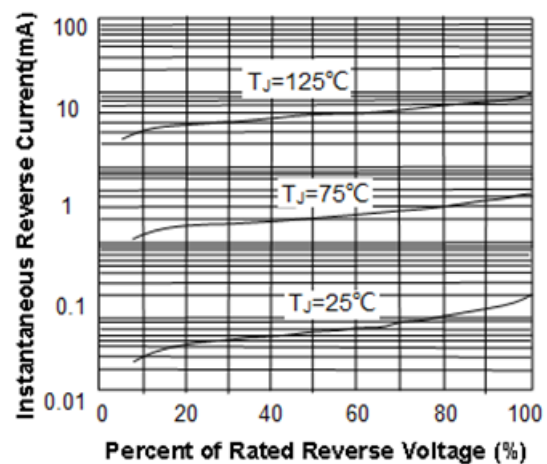
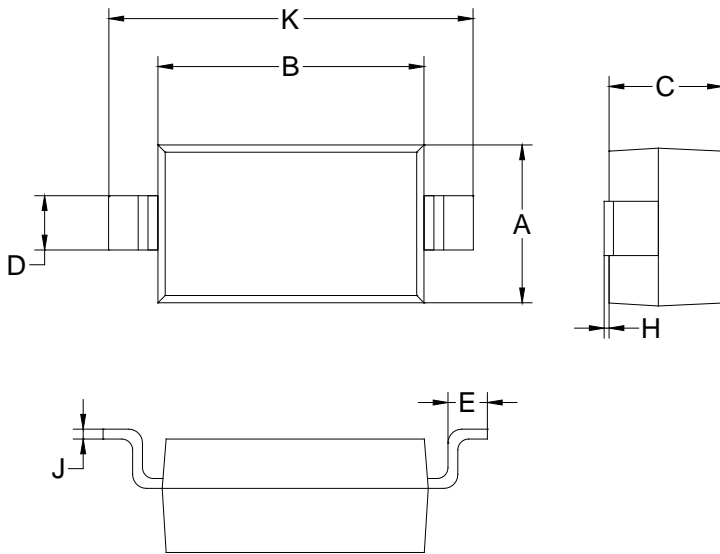


Fig.4 Typical Reverse Characteristics

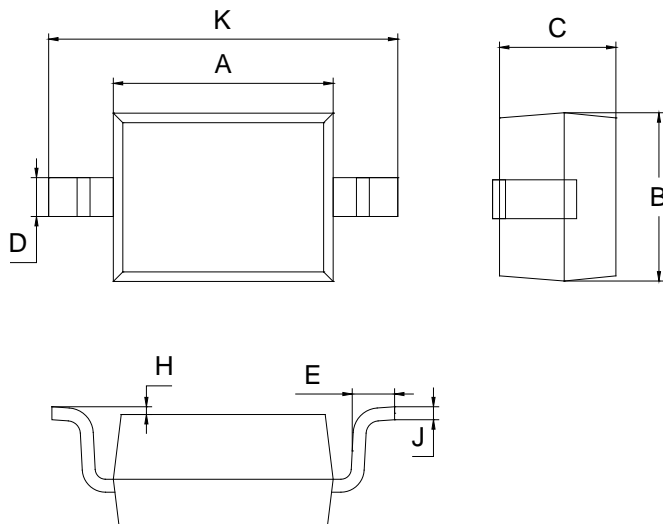
Package Outline Dimensions (unit: mm)

SOD-123



SOD-123		
Dim	Min	Max
A	1.45	1.75
B	2.55	2.85
C	1.00	1.30
D	0.50	0.60
E	0.25	0.45
H	0.02	0.10
J	0.05	0.15
K	3.55	3.85

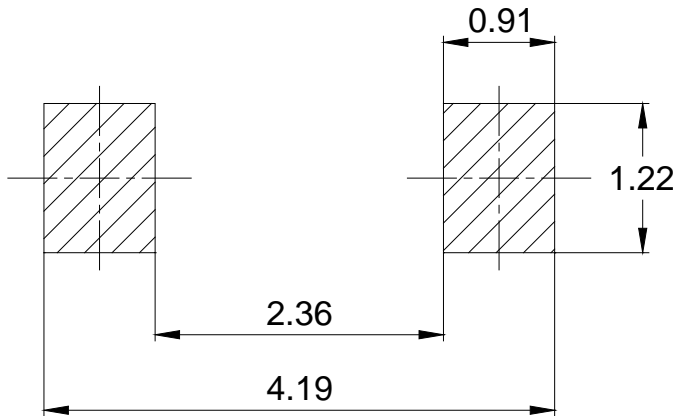
SOD-323



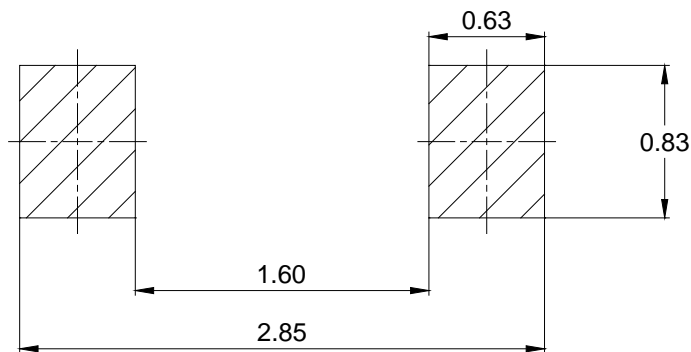
SOD-323		
Dim	Min	Max
A	1.60	1.80
B	1.20	1.40
C	0.80	0.90
D	0.25	0.35
E	0.22	0.42
H	0.02	0.10
J	0.05	0.15
K	2.55	2.75

Mounting Pad Layout (unit: mm)

SOD-123



SOD-323



IMPORTANT NOTICE

Galaxy Microelectronics (GME) reserves the right to make changes without further notice to any product herein to make corrections, modifications, improvements, or other changes. GME does not assume any liability arising out of the application or use of any product described herein; neither does it convey any license under its patent rights, nor the rights of others.